

Road

to Sustainable Rural Development in Myanmar

Zarni Minn, Ph.D

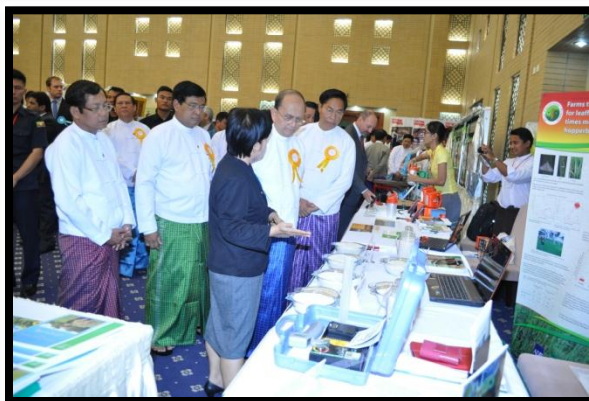
Department of Rural Development

November 25, 2014

Rationale

- **Myanmar at a crossroads** in the midst of a historic transition
- Paradigm shift in development policy with the people-centered approach
- Empowering communities and delivering outcomes of reform at the grassroots level
- Focus on poverty reduction through rural development
- New initiatives
 - Newly constituted MoLFRD as Focal Ministry for RD&PA
 - Revision of 8-point action plan
 - New Rural Development Strategic Framework (RDSF)
 - CDD programs

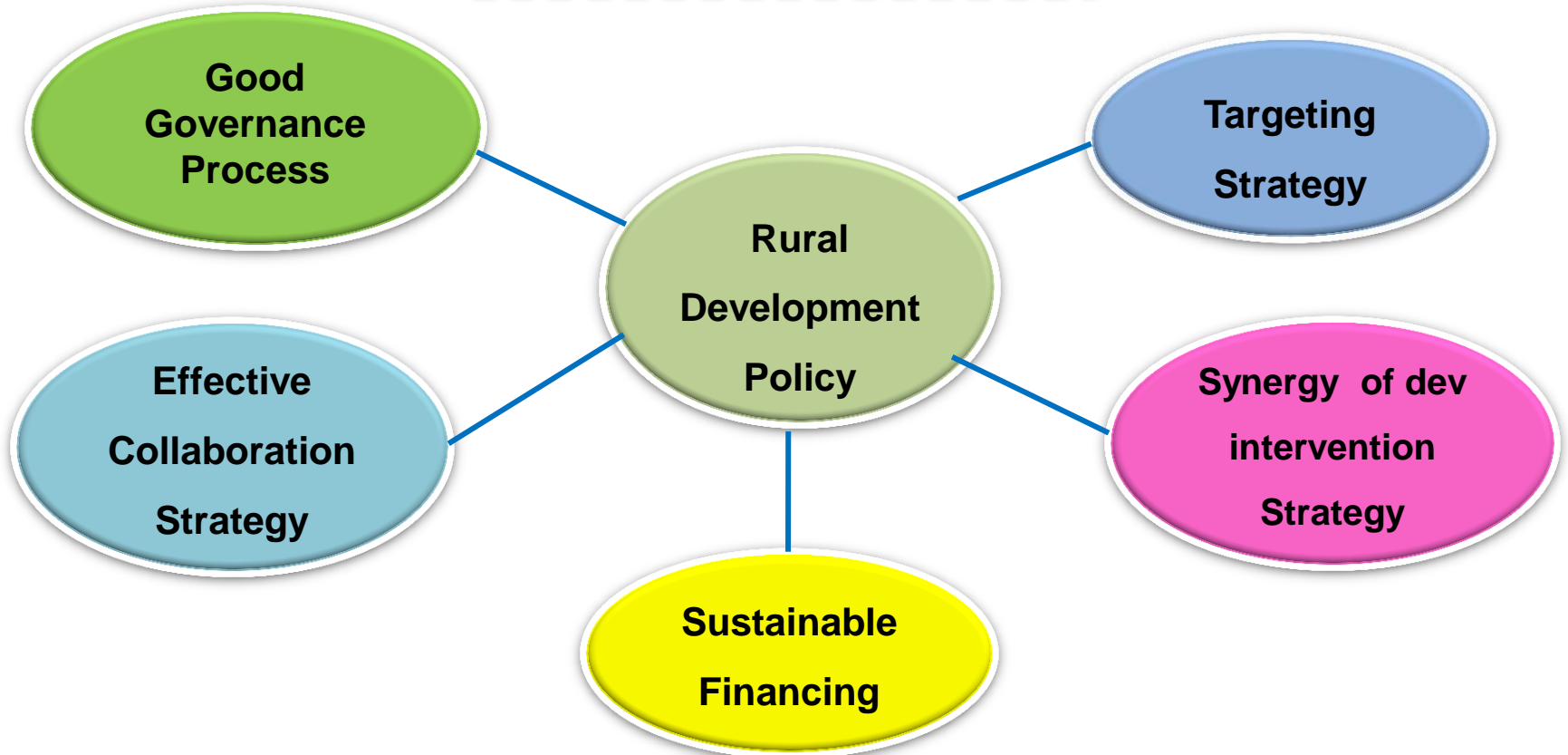
National Workshop on Rural Development Strategic Framework



The Framework was approved by the national workshop on
18-11-2013

Rural Development Strategies

Enabling people and community
to manage its own destiny for
combating poverty



Effective Collaboration

- Formation of Consortium of Development Partners
(Government agency, UN, private, donors, INGO, NGO, CSO)
- Union, State/Region, Township levels

Aim of the CDP

1. To identify projects or relevant topographical areas
2. To facilitate coordination matters
3. To improve development policy and procedure

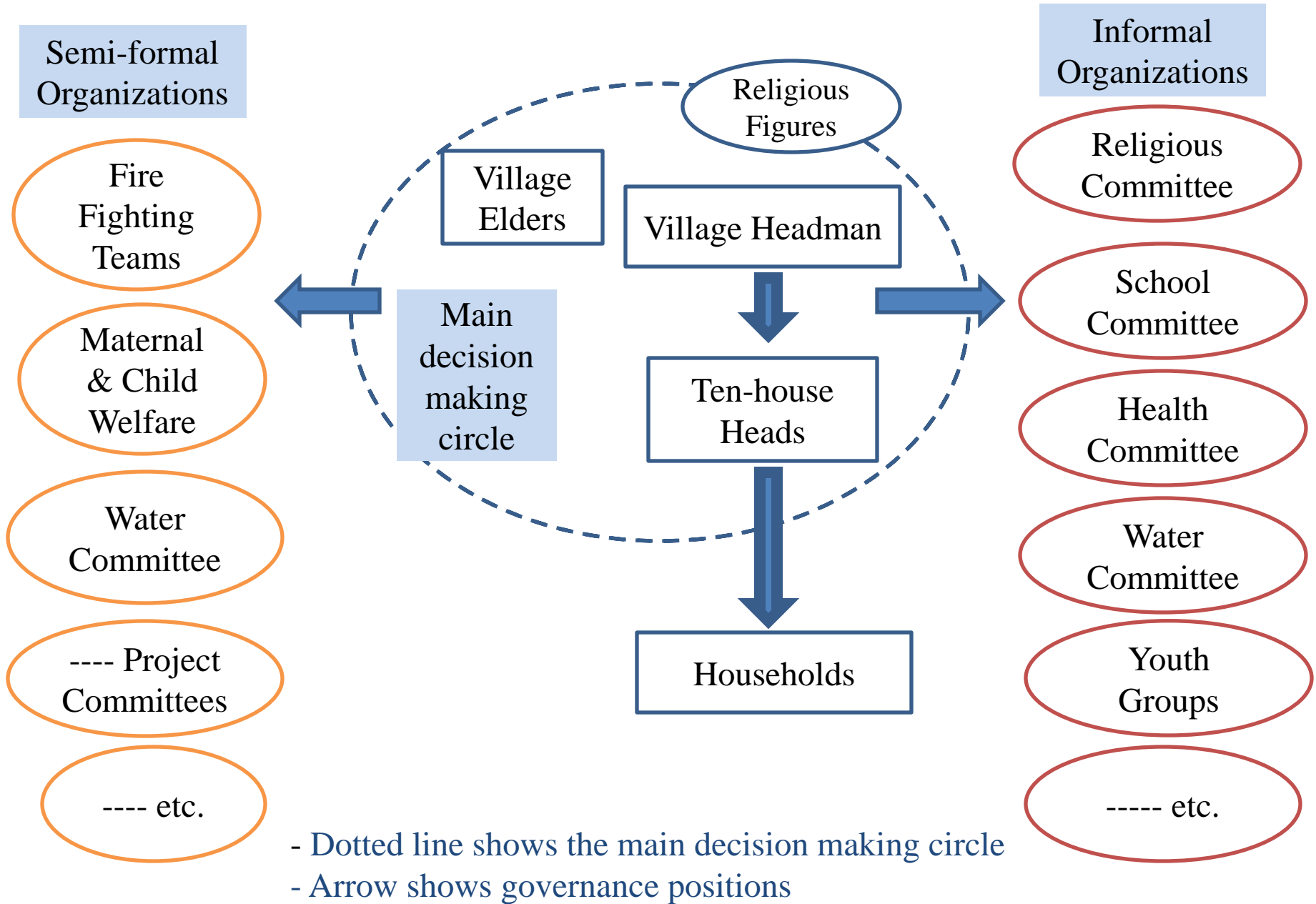
- Regular meeting of Consortium Coordination Unit
- Meetings of respective fields
- Quarterly plenary meetings of CDP
- Annual development partners conference

Community Driven Development

1. National Community Driven Development – \$ 80 million (WB)
2. Enhancing Livelihood & Incomes - \$ 12 million (ADB)
3. Village Fund Program – over Baht 30 million (CP/CITIC)
4. MSY Village Development Project - \$ 34.5 million (Gov.)

- ❖ To enable poor rural communities to benefit from improved access to basic infrastructure, services through a “people-centered approach”.
- ❖ To improve their livelihoods and incomes generation.
- ❖ To enhance the capacity of both Staffs and communities.
- ❖ To create resilient communities respond promptly and effectively to an crises or emergency.

Village Internal Structure & Organizations



Implication for RD in Myanmar

- ❖ So many committees/organizations were established
- ❖ Most of the villagers able to read and write but language is barrier
- ❖ Rural infrastructure inadequate and perhaps an important bottleneck
 - Need to distinguish between large-scale and village-level infrastructure
- ❖ Institutional structure and system is not well suit with new paradigm
- ❖ Trust in government and civic participation still shallow
- ❖ Government finance severely limited as yet
- ❖ Government's management capacity not very strong in the field of new concept

A Triangle Success Factor



Community

Can we make RDSF and CDD more Community-Driven ?

- Village as a central unit in the RD enterprise: village as a corporation and village leader as an entrepreneurial CEO (Drivers not participants)
- community resource mobilization (TDC taxes vs. donation)
- communal reward for self-help (material and non-material)
- raising inter-awareness among rural communities

A Triangle Success Factor

Government/IOs/NOs

- Seek synergy & multiplying impacts between inter-ministerial projects
- Look beyond 2015 and the immediate poverty alleviation goals
- Envision the future of rural villages (**phased approach** - basic → self-help → self-reliant villages)
- Assess progress, reward model villages – **CCCT ?**
- Government largesse combined as community incentives
- Rigorous, comparative assessment of national pilot projects

Community leadership

- Leadership training on both men and women –
- To be change agents to disseminating technical innovations & to be managers in planning and implementation



Thank You

Department of Rural Development

minnzarni@gmail.com

+ 95 9 402755888

+ 95 67 409415